

Section M

Lampholders, Starters And Adapters

INDEX

PAGE

Fluorescent Lampholders

Medium Bi-Pin	M-2
Slimline	M-3
Recessed Double Contact	M-4
Snap-In Quickwire	M-5

Incandescent Lampholders

Porcelain	M-6
Plastic	M-7

Accessories

Incandescent Lampholders	M-8
Incandescent Accessories	M-9
Fluorescent Starters and Starter Socket	M-10
Plugs, Taps and Adapters	M-11
Plugs and Connectors	M-12





RL320



4070



4301W



4304W



RL325



4400W



4300W

MEDIUM BI-PIN – LAMP SIZE T8, T12 Inches (mm)

Description	Rating	Color	Catalog Number
Tall profile; slide-on 4-wire with captive nut; push wire terminations	660W 600V	White	RL320
Pal-nut installed with slide-on lugs for 18-gauge metal	660W 600V	White	4051*
U-bend lampholder with slide-on lugs for 18-gauge metal	660W 600V	White	4070**
Tapped bracket; .32 (8.0) thick; #6-32x14" screw assembled	660W 600V	White	4301W

Note: *Screws supplied separately.
**U Bend circuit interrupting not available.

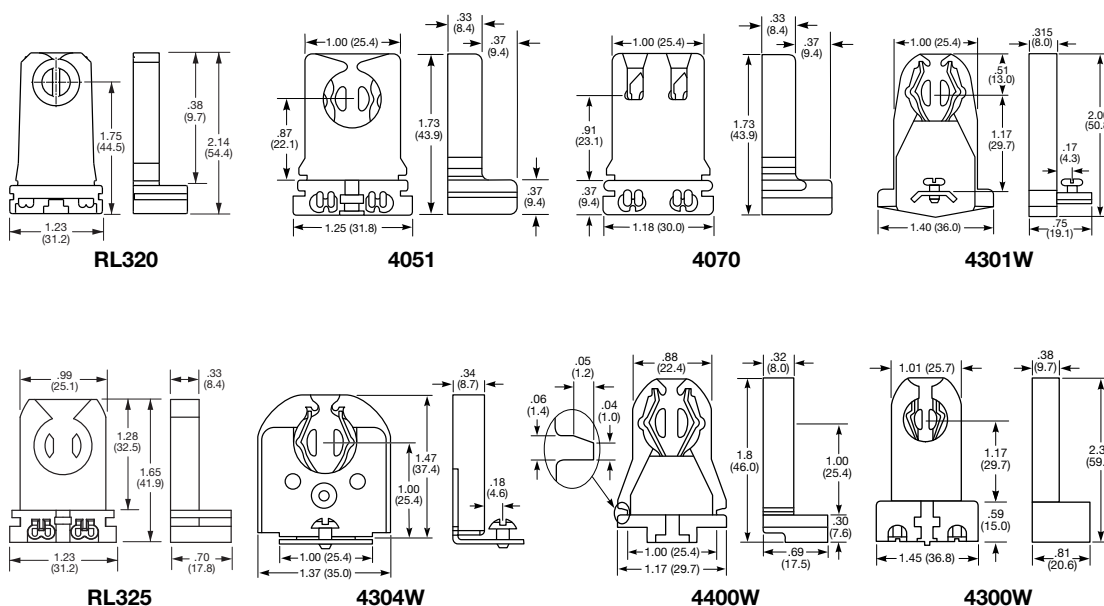
MEDIUM BI-PIN LOW PROFILE – LAMP SIZE T8, T12 Inches (mm)

Description	Rating	Color	Catalog Number
Tapped bracket; .34 (8.7) thick; screw assembled	660W 600V	White	4304W
Lampholder without bracket; .34 (8.7) thick; with centered vertical slot in base to engage lance tab	660W 600V	White	4304W12
Center hole tapped for #8-32 screw; .34 (8.7) thick	660W 600V	White	4304W7

MEDIUM BI-PIN – LAMP SIZE T6, T8, T12 FOR PRE-HEAT OR RAPID START LAMPS Inches (mm)

Description	Rating	Color	Catalog Number
Low profile; push wire terminations: Slide-on 4-wire with captive nut	660W 600V	White	RL325
Slide-on 4-wire	660W 600V	White	RL325A
Slide-on 2-wire	660W 600V	White	RL325B
Tall profile .32 (8.0) thick with "U" base; slide-on lugs	660W 600V	White	4400W
Surface mount; tombstone with terminal screws	660W 600V	White	4300W

PRODUCT DIMENSIONS Inches (mm)



SLIMLINE LAMPHOLDERS – LAMP SIZE T6, T8, T12

Description	Rating	Color	Catalog Number
Stationary end; pedestal type; single pin lamp; slide-on base; push wire terminations	660W 600V	White	RL311
Plunger end; pedestal type; single pin lamp; slide-on base; push wire terminations	660W 600V	White	RL310
Stationary end; quick wired with slide-on lugs and solid platform	660W 600V	White	4385W7
Plunger end; quick wired with slide-on lugs and solid platform	660W 600V	White	4386W7
Stationary end with pal-nut and screw installed	660W 600V	White	4376
Plunger end with pal-nut and screw installed	660W 600V	White	4377



RL311



RL310



4385W7



4386W7

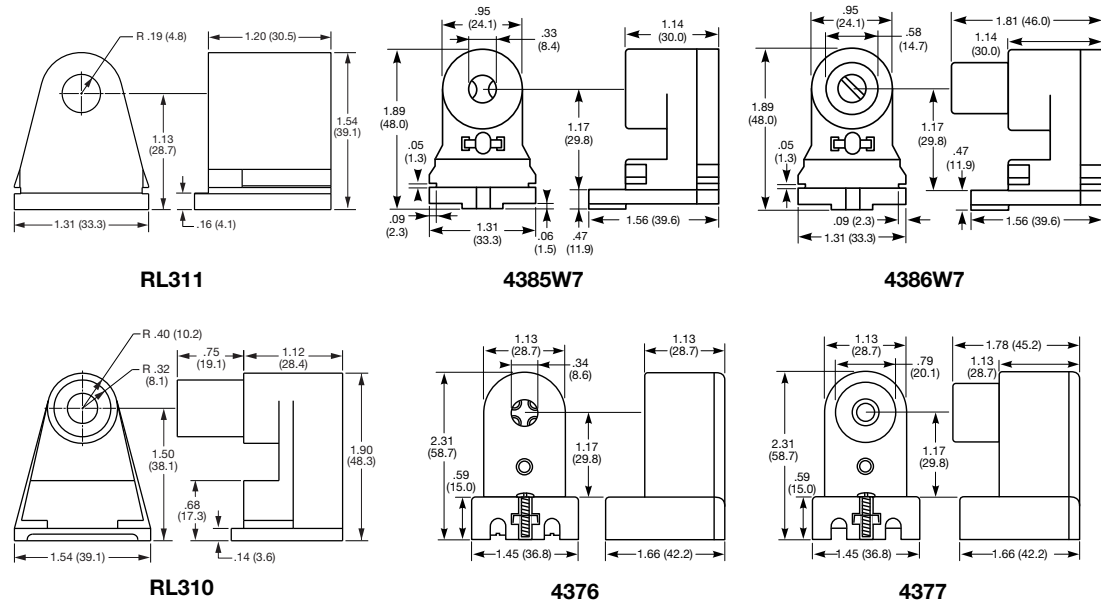


4376



4377

PRODUCT DIMENSIONS Inches (mm)



Lampholders, Starters and Adapters

Recessed Double Contact Fluorescent Lampholders



RECESSED DOUBLE CONTACT – LAMP SIZE T12, T17

Description	Rating	Color	Catalog Number
Horizontal stationary end; pedestal type for high output lamp; slide-on base; push wire terminations	660W 600V	White	RL306
Horizontal plunger end; pedestal type for high output lamp; slide-on base; push wire terminations	660W 600V	White	RL305
Horizontal stationary end; terminal screws	660W 600V	White	4876
Horizontal plunger end; terminal screws	660W 600V	White	4877
Horizontal stationary end; with "U" slot base; push wire terminations	660W 600V	White	650SH
Horizontal plunger end; with "U" slot base; push wire terminations	660W 600V	White	650PH
Horizontal stationary end; with slide-on lugs and platform; push wire terminations	660W 600V	White	650SHB
Horizontal plunger end; with slide-on lugs and platform; push wire terminations	660W 600V	White	650PHB



RL306



RL305



4876



4877



650SH



650PH

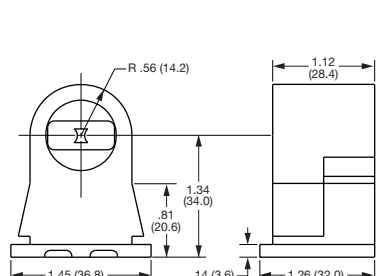


650SHB

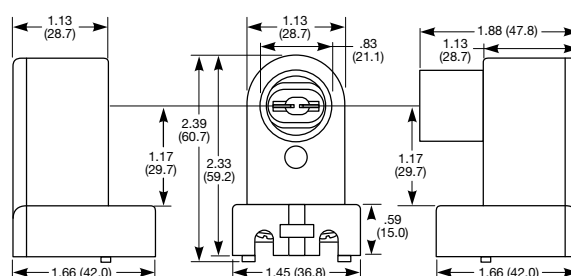


650PHB

PRODUCT DIMENSIONS Inches (mm)



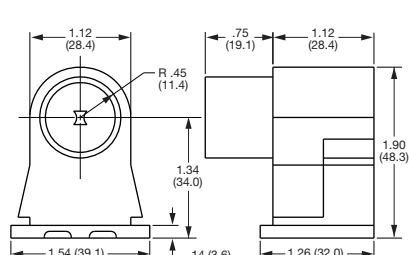
RL306



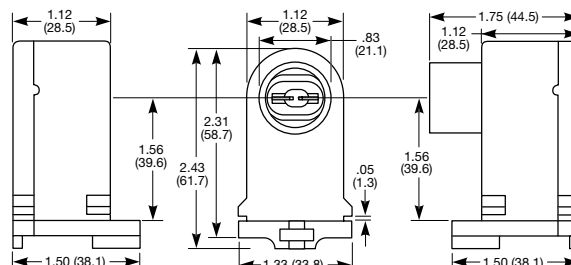
4876 Side

4876, 4877

4877 Side



RL305



650SHB Side

650SHB, 650PHB

650PHB Side



600S

MEDIUM BI-PIN – LAMP SIZE T6, T8, T12, T17

Description	Rating	Color	Catalog Number
Stationary end; medium bi-pin; push wire terminations	660W 600V	White	600S
Plunger end; medium bi-pin; push wire terminations	660W 600V	White	600P
Stationary end; recessed double contact; push wire terminations	660W 600V	White	620S
Plunger end; recessed double contact; push wire terminations	660W 600V	White	620P



600P

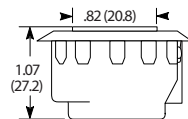


620S

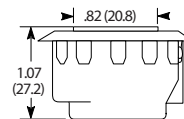


620P

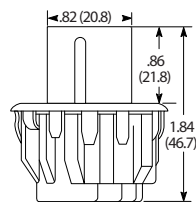
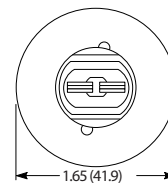
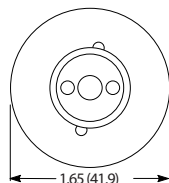
PRODUCT DIMENSIONS Inches (mm)



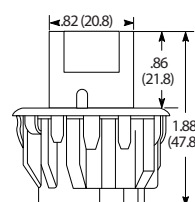
600S



620S



600P



620P

PORCELAIN LAMPHOLDERS

Description	Rating	Color	Catalog Number
Keyless; 4 terminal screws	660W 250V	White	RL8804
Keyless; 6-inch pigtails	660W 250V	White	RL8806
Pull chain; 2 terminal screws	660W 250V	White	RL8812
Pull chain; 6-inch pigtails	660W 250V	White	RL8816
Pull chain with receptacle; 2 terminal screws	660W 250V 15A 125V NEMA 5-15R	White	RL8822



RL8804



RL8806



RL8812

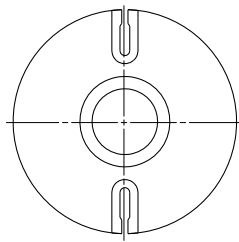
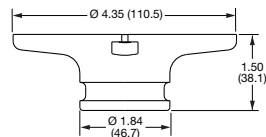


RL8816

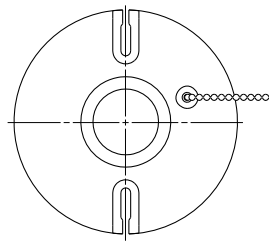
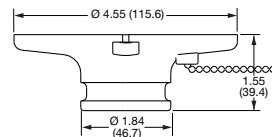


RL8822

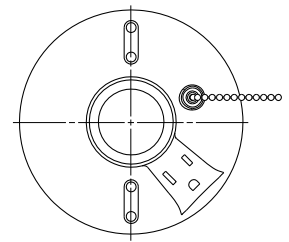
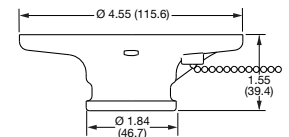
PRODUCT DIMENSIONS Inches (mm)



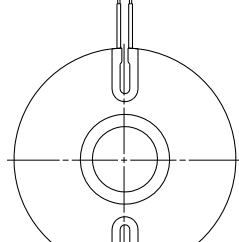
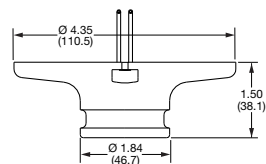
RL8804



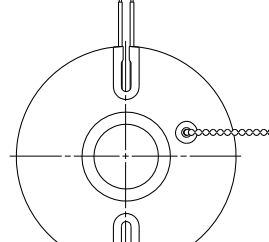
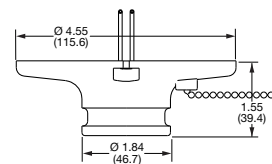
RL8812



RL8822



RL8806



RL8816

PLASTIC LAMPHOLDERS



RL8504

Description	Rating	Color	Catalog Number
Keyless; 4 terminal screws	660W 600V	White	RL8504



RL8506

Keyless; 6-inch pigtails	660W 600V	White	RL8506
--------------------------	-----------	-------	---------------

Pull chain; 2 terminal screws	660W 250V	White	RL8512
-------------------------------	-----------	-------	---------------

Pull chain; 6-inch pigtails	660W 250V	White	RL8516
-----------------------------	-----------	-------	---------------

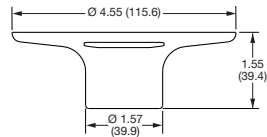


RL8512

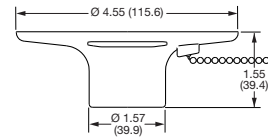


RL8516

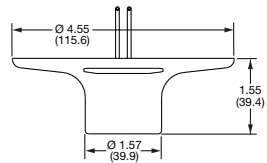
PRODUCT DIMENSIONS Inches (mm)



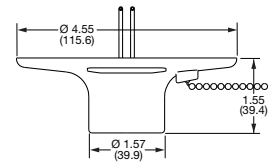
RL8504



RL8512



RL8506



RL8516



INCANDESCENT LAMPHOLDERS

Description	Rating	Color	Catalog Number
Incandescent; medium base socket; turn knob; on/off	250W 250V	Brass	RL101
Incandescent; medium base socket; turn knob; 3-way; low, medium and high	250W 250V	Brass	RL102
Incandescent; medium base socket; push through; on/off	660W 250V	Brass	RL105
Incandescent; medium base socket; keyless	660W 250V	Brass	RL100
Incandescent; medium base socket; pull chain; on/off	660W 250V	Brass	RL106
Pony cleat; medium base socket; porcelain	660W 250V	White	RL152
Pony cleat; medium base socket; plastic	660W 250V	Black	RL153
HID socket; prefocus type; medium base bayonet; porcelain; surface or clamp mounting	1200W 250V	White	RL3742
HID socket; prefocus type; medium base bayonet; porcelain; surface or clamp mounting; with thermoplastic base	1000W 250V	Black	3743R



RL101



RL105



RL106



RL152

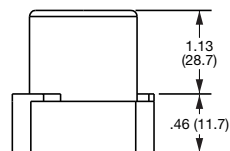
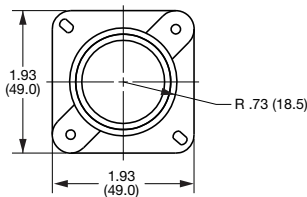


RL3742

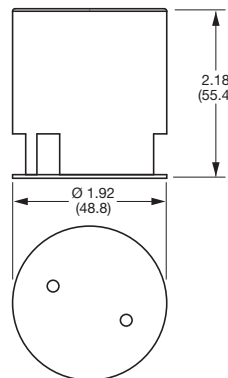
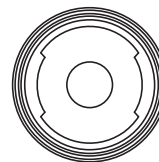


3743R

PRODUCT DIMENSIONS Inches (mm)



RL152



RL3742

INCANDESCENT ACCESSORIES



RL124



RL124H



RL150



RL200



RL201



RL202

Description	Rating	Color	Catalog Number
Pigtail medium base socket with 6-inch leads; rubber with #14 gauge wire; approved for use at construction sites when used with bulb cages; acceptable for open wiring without an outlet box when using suitable splices	660W 250V	Black	RL124
Phenolic medium base socket with hook; insulation piercing termination	660W 250V	Black	RL124H
Porcelain socket extension; medium base to medium base	600W 250V	White	RL150
Outlet adapter; 2-prong non-polarized plug to medium base lampholder	15A 125V NEMA 1-15P	Ivory	RL200
Medium lampholder adapter; medium base lampholder to outlet; without ground	15A 125V NEMA 1-15R	Ivory	RL201
Medium base lampholder to lampholder adapter; pull chain with two 2-prong outlets; without ground	660W 250V 15A 125V NEMA 1-15R	Black	RL202



FS850

MANUAL RESET STARTERS

Number of Pins	Lamp Watts	Catalog Number
2	14, 15 and 20 watts	FS20A
2	40 watts	FS40400A
4	85, 90 and 100 watts	FS850

STANDARD TYPE STARTERS



FS4A

Number of Pins	Lamp Watts	Catalog Number
2	14, 15 and 20 watts	FS2A
2	13, 30 and 40 watts	FS4A
2	4, 6 and 8 watts	FS5A
2	25 watts	FS25A



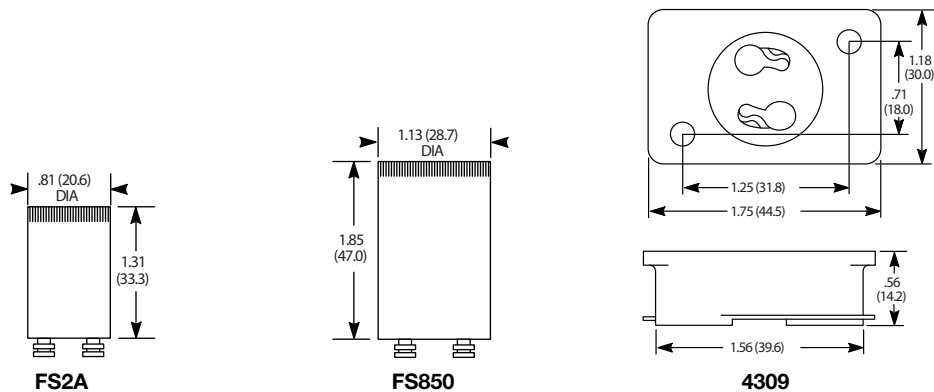
4309

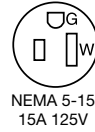
FLUORESCENT STARTER SOCKET – FOR FS2A, FS4A, FS5A, FS20A, FS25A, FS40400A

Description	Catalog Number
Standard size; 2-pin	4309*

Note: *Not CSA Certified.

PRODUCT DIMENSIONS Inches (mm)





RT600W

PLUGS, TAPS AND ADAPTERS

Description	Color	Catalog Number
Duplex receptacle to six outlets; with ground; polarized	Ivory White	RT600I RT600W
Single receptacle to three outlets; with ground; polarized	Ivory White	RT300I RT300W
Single receptacle to three outlets; heavy duty rubber; with ground; polarized	Orange	RT303
Two wire to U-ground; polarized	Ivory	RT200
Cube tap; without ground; polarized	White	RT100W



RT300W



RT303



RT200



RT100W

Note: Adapters are not intended to be used as a replacement for permanent devices. They are intended for temporary use only.



PLUGS, TAPS AND ADAPTERS

Description	Color	Catalog Number
Male end : 3-wire 10A 250V; 15A 125V; non-NEMA locking blades; female end: 3-wire; 15A 125V; straight slot grounding	White	9053AB*
Male end: 3-wire 15A 125V straight blade grounding; female end: 10A 250V; 15A 125V; non-NEMA locking slots	White	9054AB*•



9053AB










9054AB

Note: Adapters are not intended to be used as a replacement for permanent devices. They are intended for temporary use only.

*Not UL Listed.

•Must always be used with grounded receptacle.

PLUGS AND CONNECTORS

	Description	Color	Catalog Number
 RP123I	Straight plug; non-polarized; two blade; SPT 1 and 2 cord 18/2 and 16/2 AWG	Ivory White	RP123I RP123W
 RP123PI	Straight plug; polarized; two blade; SPT 1 and 2 cord 18/2 and 16/2 AWG	Ivory White	RP123PI RP123PW
 RP101BK	Straight plug; polarized; two blade; light duty; wire range: #16-18 AWG; up to .25 inch diameter cord	Black White	RP101BK RP101W
 RP102BK	Straight connector; polarized; two blade; light duty; wire range: #16-18 AWG; up to .25 inch diameter cord	Black White	RP102BK RP102W
 RP646	Straight plug; non-polarized; two blade; heavy duty; wire range: #14-18 AWG; up to .33 inch diameter cord	Black	RP646
 RP648	Straight plug; polarized; two blade; heavy duty; wire range: #14-18 AWG; up to .33 inch diameter cord	Black	RP648
 RP649	Straight connector; polarized; two blade; heavy duty; wire range: #14-18 AWG; up to .33 inch diameter cord	Black	RP649